



ALL ASHORE!

An Overview of Kauai

Kauai's first settlers arrived around 500 A.D., approximately 500 years before the rest of the islands were settled. Through a succession of kings, the island prospered. Captain James Cook landed on Kauai first, coming ashore at Waimea in 1778. Kauai is also known for being the only island that resisted take over attempts by King Kamehameha during his quest to unify the islands under one rule. The island remained an independent kingdom until 1810. Kauai is the smallest of the four major islands covering 552 square miles.

Kauai is the oldest and most northerly of the Hawaiian Islands, famous for Waimea Canyon, the "Grand Canyon of the Pacific." Kauai's craggy mountains, gorgeous valleys, and many breezy beaches have managed to avoid excessive development. Much of Kauai looks just like it did when the first Polynesians paddled up to the shore.

Of course, there are resorts, hotels, and some of the island's best golf courses, however, no building on Kauai is allowed to rise above the level of the coconut trees. As a result, you are assured of several WOW moments as you experience the extreme beauty of Kauai. The east shore offers the majesty of the Wailua Falls and Fern Grotto. Hanalei lies on one of the most beautiful bays in Hawaii set against a backdrop of fuzzy green cliffs. Lihue is the principal city on Kauai. The north shore is one of the most beautiful spots in the entire state. Once a sugar town, Kilauea now caters to guests bound for Hanalei and the Na Pali Coast. The Na Pali Coast is a series of small villages that are a throwback to earlier times. The south shore has a series of Hawaiian towns and botanical gardens that are definitely world class.

While Nawiliwili resides more towards the southern end of the island, it still experiences a fair amount of rainfall, receiving almost 50 inches in an average year. The mountain at the very center of Kauai, Mount Waialeale receives so much rain each year that totally unique flora and fauna exist in the Alakai Swamp at its summit.

Receiving over 600 inches of rain per year, Mount Waialeale is one of the wettest places on earth.

Kauai used to be covered with sugarcane plantations. Today they're gone, but you can still find sugarcane grown here, as well as papaya, pineapple, bananas and other tropical fruits.

STORE#

1

DEL SOL
FREE BEACH BAG...
with purchase of two T-shirts!

STORE#

2
a,b

MAUI DIVERS JEWELRY
Ask about the treasure chest key!

STOP BY THE SHOPPING DESK...
with any questions you might have
regarding our exciting ports of call!

Kauai at a Glance

Capital: Honolulu

Location: Kauai is the northern most island and the fourth largest of the 8 main Hawaiian islands

Transportation: Taxi, tour buses, shuttle, city buses available

Currency: U.S. dollar

Language: English and Hawaiian

Population: 63,689

Banking: Seven local banks in the area

Post Office: United States Postal Service branch take care of a host of package shipping and delivery needs. All located between Rice Street and Kele Street in Lihue

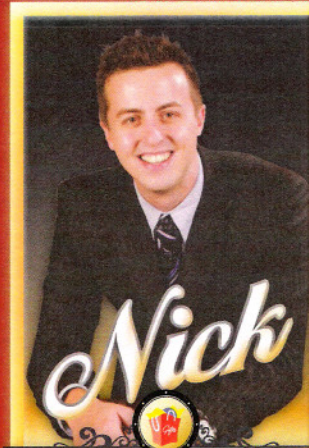
Airport: Lihue airport serves the island and is four miles north of the cruise ship port of Nawiliwili Harbor

Port Adventures:

Check your ticket for the correct meeting time and location for your tour. Your Port Adventures Team will direct you to transportation. Taxi service is available outside the cruise ship terminal.

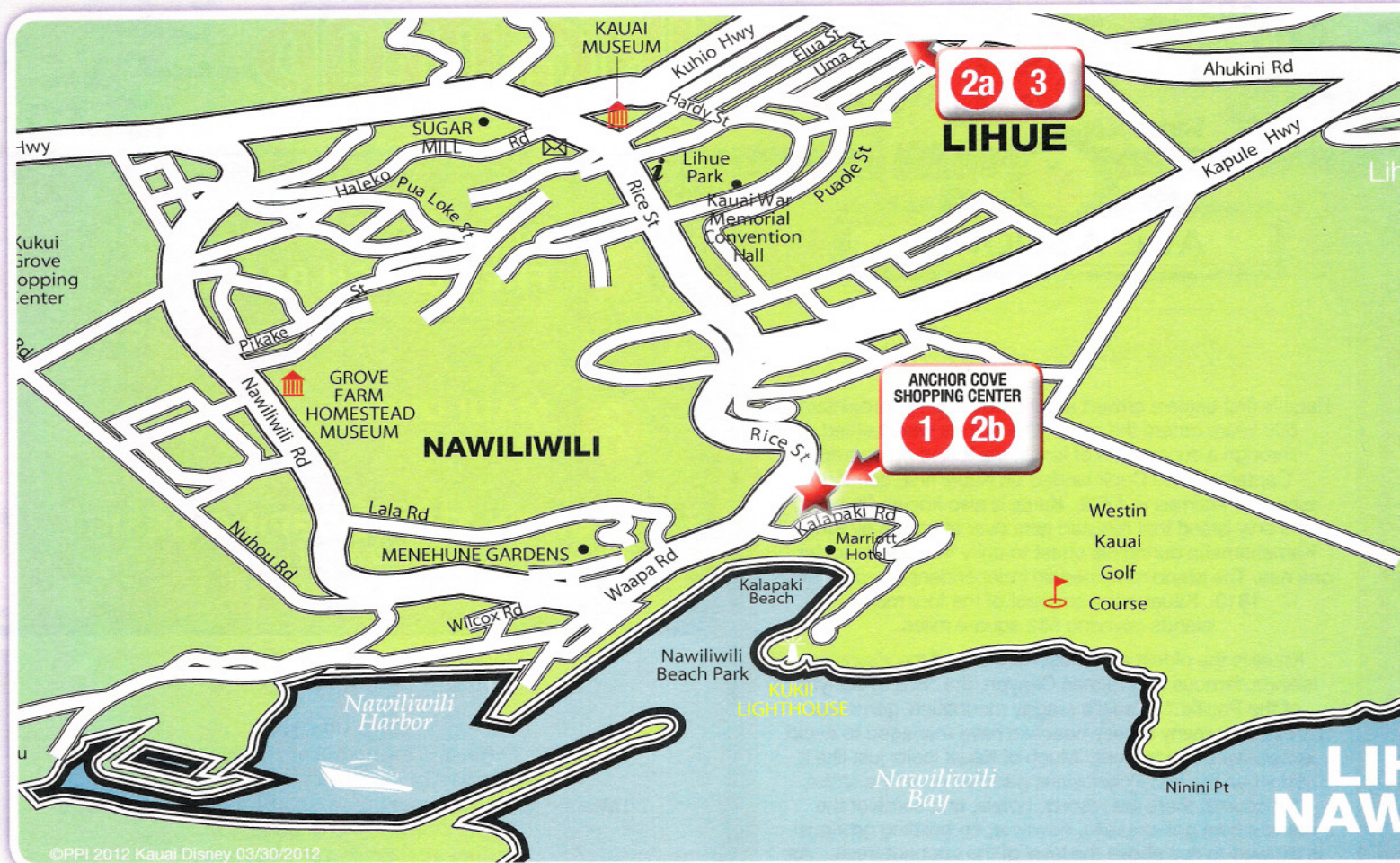
In Case of Emergency:

Inchcape Shipping Services
Foreign Trade Zone #9, 521 Ala Moana Blvd.
Suite 2256, Honolulu, HI 96813
Tel: (808) 599-8604
Fax: (808) 529-8603



SHOPPING GUIDE

PORT SHOPPING MAP





1 DEL SOL

The World's Largest Color-Change Retailer!

- Exclusive Disney Line: Magical tiaras, hair clips and nail polishes
- Amazing color-change gifts for the entire family
- Over 100 Clothing Options: T-shirts, shorts, women's tees and more
- Over 20 shades of nail polish that change color in the sun
- Solize™ Sunglasses: Polarized lenses with lifetime guarantee
- Just for Kids: T-shirts, toys, hair accessories and more
- Jewelry & Accessories: Hair clips, hats, rings, pendants and earrings
- Free Gift: Free beach bag with the purchase of two T-shirts

2a,b MAUI DIVERS JEWELRY

Lifetime Guarantee Since 1958

- Visit Maui Divers for Hawaii's widest selection of fine jewelry
- Maui Divers is the largest jewelry designer in Hawaii
- Black Tahitian & South Sea pearls, diamonds and other fine gems
- The original black coral jeweler – Hawaii's official state gemstone
- Hawaiian jewelry, Wyland and other marine life charms
- Visit our Island Pearl store, located right next door at Anchor Cove
- All jewelry is backed with a full lifetime guarantee
- Located inside Hilo Hattie & at Anchor Cove Shopping Center
- Win prizes – ask for your free treasure chest key at the Hilo Hattie location
- Open 8:30 am- 6:30pm (Hilo Hattie), 9:00am- 9:00PM (Anchor Cove)

3 HILO HATTIE

Hawaiian Gifts, Souvenirs and Prints

- "Best Hawaiian Store in Hawaii" by the Hawaii Convention Bureau
- Selection of Hawaiian gifts, souvenirs, fashions and T-shirts
- Gourmet foods, island jewelry – official retailer of "Aloha Festivals"
- Extensive selection of "Made in Kauai" cookies, coffee and more
- Take the free shuttle from the cruise ship terminal
- Visit Maui Divers Jewelry located inside this store

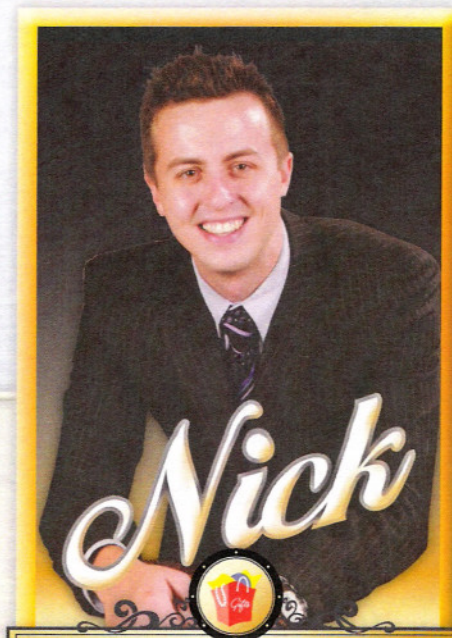
Hawaii

DON'T FORGET YOUR

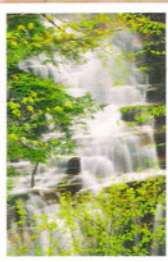
- ✓ FREE Diamond Charm Bracelet Card
- ✓ Photo ID & Key to the World Card
- ✓ Cash and/or Credit Cards
- ✓ VIP Cards

PORT ADVENTURES:

Check your ticket for the correct meeting time & location for your tour. Your Port Adventures Team will direct you to transportation.



SHOPPING GUIDE



Puerto Vallarta • Guadalajara • Leon • Tampico

Merida • Cancun

Belize

Belmopan

Honduras

Tegucigalpa

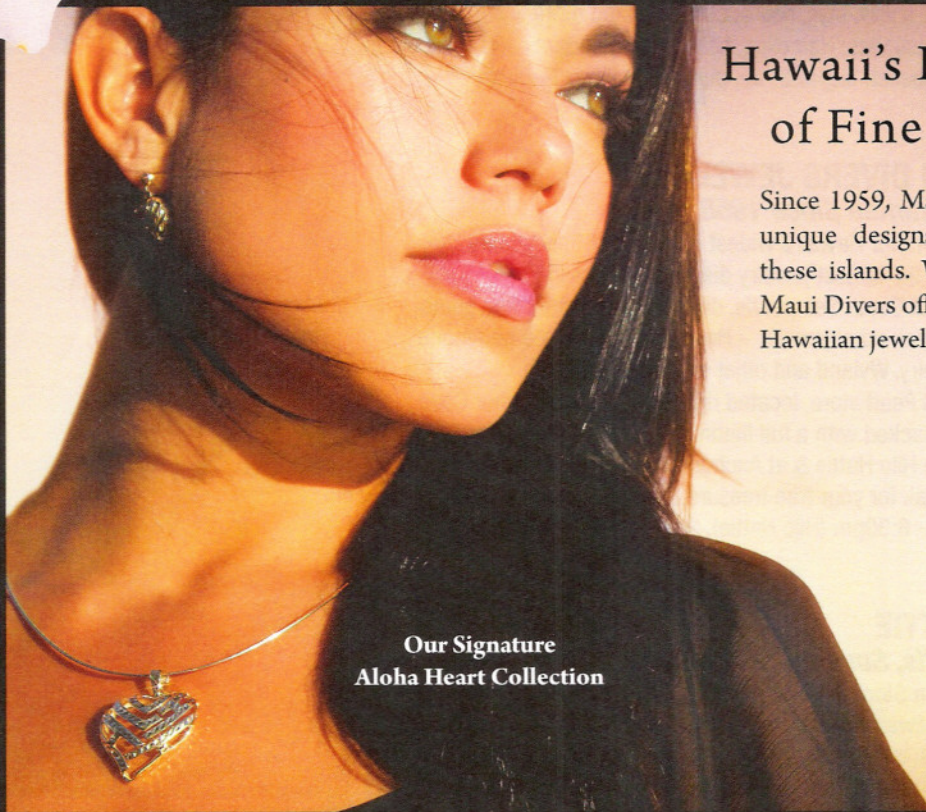
San Salvador

Nicaragua

Managua

San Jose

Costa Rica



Our Signature
Aloha Heart Collection

Hawaii's Largest Selection of Fine Island Jewelry

Since 1959, Maui Divers Jewelry has created unique designs inspired by the beauty of these islands. Whatever your personal style, Maui Divers offers Hawaii's finest selection of Hawaiian jewelry, island pearls and more.



Maui Divers Jewelry
Island inspired, forever yours.

Over 50 locations including
all Hilo Hattie stores
800-253-6016 mauidivers.com

**Complimentary Sterling Silver Palm Tree Pendant and Chain
with any \$50 minimum purchase***

*Present this port map at time of purchase. Cannot be combined
with other discounts or special offers. Subject to change and availability.
Tax not included. Restrictions apply.



FREE SHUTTLE SERVICE FROM ALL PIERS

OAHU

Maui Divers Jewelry Design Center
Ala Moana Center
International Marketplace
Hilo Hattie Nimitz Highway

MAUI

Queen Kaahumanu Center, Kaanapali
Pioneer Inn, Lahaina
Whalers Village, Kaanapali
Hilo Hattie Lahaina

KAUAI

Anchor Cove Shopping Center
Hilo Hattie Lihue

BIG ISLAND

Hilo Hattie Hilo



Shop with confidence at each of the recommended stores. All stores listed on the map have paid a promotional fee and given Disney Cruise Line guests a Buyer's Guarantee valid for 60 days after purchase. This guarantee is valid for repair or exchange. Please note the following conditions that apply to the guarantee: Guest negligence or buyer's regret is excluded. Only appraisals from independent, accredited graduate gemologists not affiliated with any retail jeweler will be considered. Price paid for merchandise or verbal claims or agreements between merchant and guest will not be grounds for returns. Electronics and watches requiring service must be returned by the consumer to the respective manufacturer. All purchases, including fragile items, must be checked before leaving the store. Do not mail merchandise without prior authorization. Guests are responsible for postage and appraisal costs. The PPI Group, 4517 NW 31st Avenue Ft. Lauderdale, FL 33309-3403, Customer Service: 1.888.774.4768 or 954.377.7777, email: Service@ppigroup.com.

© PPI 2012 Kauai Disney 04/27/2012