

PERSONAL NAVIGATOR

Sunrise: 5:49 a.m. Sunset: 9:15 p.m.
 Evening Attire: Cruise Casual
 All Ashore: Please See Tendering Letter
 All Aboard: 6:30 p.m.
 Sunday: Partly Sunny High: 77°F/25°C
 Monday: Sunny High: 73°F/23°C

SUNDAY, JUNE 16, 2013

VILLEFRANCHE

DISNEY CRUISE LINE PRESENTS



WALT DISNEY THEATRE
 Deck 4, Forward
 6:30 p.m. & 8:30 p.m.



Assistance available at the entrance to the Walt Disney Theatre 30 minutes prior to show time.

HAPPY FATHER'S DAY

Welcome To Villefranche, France

Villefranche is located in the south of France overlooking the Mediterranean. It is the gateway to the French Riviera including Nice (pronounced "niece"), known for its long promenade along the coast and its open markets; the historic town of Eze; Cannes, famous for hosting the international film festival; and the principality of Monaco.

Villefranche was originally founded by the Greeks in the fourth century and taken over by the Romans in the second century. Upon the decline of the Roman Empire, Nice was under Italian rule.

In the 19th century, King Immanuel III sold Nice to Napoleon III. Once Nice became a French territory the railway was extended from Marseilles, and residents would begin to travel for leisure to this picturesque seaside village.



Disney Cruise Line

PORT ADVENTURES



IMPORTANT INFORMATION

Please check your tour tickets for meeting times and locations. Visit the Port Adventures Desk, Deck 3, Midship for any questions.

DINNER MENU

Animator's Palate: Show Dinner
 Parrot Cay: Island Dinner
 Lumière's: French Dinner

DRINK OF THE DAY

Deja Vu (Alcoholic)
 Pina Coco Lada
 (Non Alcoholic)

IMPORTANT NUMBERS

Fire/Security: 7-3001
 Medical Emergency: 7-3000
 Health Center: 7-1923

FUN FOR ALL AGES HIGHLIGHTS

GIANT JENGA

Promenade Lounge, Deck 3, Aft - 9:45 a.m.
Join your Cruise Staff team for fun and games.

FAMILY CRAFTS

Promenade Lounge, Deck 3, Aft - 11:30 a.m. & 3:45 p.m.
Join your Cruise Staff to make fun souvenirs to remember your cruise.

DISNEY TRIVIA

Promenade Lounge, Deck 3, Aft - 1:00 p.m.
Navigate your way through another round of questions to test how much you really know about Disney.

THE WHEEL

Promenade Lounge, Deck 3, Aft - 6:30 & 8:30 p.m.
A special version of this popular TV game show.

FAMILY DANCE PARTY WITH THE DREAMERS

Promenade Lounge, Deck 3, Aft - 7:30 p.m.
Join our duo, The Dreamers, for a fun-filled family dance party.

WHO WANTS TO BE A MOUSEKETEER?

Studio Sea, Deck 4, Midship - 7:45 p.m. & 9:45 p.m.
Your chance to get in to the "hot seat" and win limited edition prizes. Or, play along as part of our live studio audience.

FAMILY SUPERSTAR KARAOKE

Studio Sea, Deck 4, Midship - 10:30 p.m.
Join your Cruise Staff in Studio Sea tonight and sing along to your favorite song - fun for everyone.

SPECIAL GUEST PRESENTATION TODAY

LA SPEZIA: THE BIRTH OF BEAUTY
FEATURING GLEN DOLBERG, HISTORIAN
Buena Vista Theatre, Deck 5, Aft - 7:45 p.m.

From the moment that Botticelli's Birth of Venus burst onto the sweets-loving palate of human tastes, there has hardly ever been a way to satisfy our re-born desire for more mellifluous beauty. Join Glen Dolberg for a look at the beauty you will encounter when traveling through Florence.



ADULT ACTIVITY HIGHLIGHTS

VISTA SPA FITNESS CLASSES & SEMINARS

Stretch & Relax - Vista Spa Fitness Center - 7:30 a.m.
Introduction to Acupuncture - Vista Spa Fitness Center - 9:00 a.m.
Couples Massage Workshop - Vista Spa Fitness Center - 10:00 a.m.
Facial Workshop - Vista Spa Fitness Center - 2:30 p.m.
Hair Seminar - Vista Spa Fitness Center - 3:00 p.m.
Fab Abs Wellness Seminar - Vista Spa Fitness Center - 4:00 p.m.



CLUB
18+21

SOCIAL

Diversions, Deck 3, Forward - 10:00 p.m.

SINGLES' MINGLE

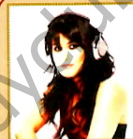
Cove Cafe, Deck 9, Midship - 5:15 p.m.
Single, single parent or just traveling alone? Join your Cruise Staff for an informal gathering.

LIVE MUSIC WITH TIM MOSS

Sessions, Deck 3, Forward - 7:45, 9:45, 10:45 & 11:45 p.m.
Join Tim as he plays live piano for your listening enjoyment.

VARIETY SHOW: JUNK

Rockin' Bar D, Deck 3, Forward - 10:30 p.m.
Featuring the Music & Comedy of Junk, in this Adult exclusive cabaret style show.



GUEST DJ MISS NINJA

Born and raised in Los Angeles California, DJ Miss NINJA began DJing at the age of 13 and was named by her colleagues after discovering that she is a second degree black belt and World Champion in the martial art of Ju-Jitsu. She's opened for DJ Q-Bert and DJed shows with LL Cool J, Cypress Hill, and Santana. She is also very well known around the LA radio scene and has spun events for 102.7KIIS-FM, 97.1AMP RADIO, FOX SPORTS RADIO & 95.5KLOS, and was featured in the Dubstep issue of Party Time Magazine. DJ Miss NINJA's favorite Disney movies are the Sword in the Stone and Aladdin.

KICK-OFF \$500 JACKPOT BINGO

Rockin' Bar D, Deck 3, Forward
Card Sales - 7:30 p.m.
Game Starts - 7:45 p.m.

Join us for our first session of Jackpot Bingo, with four CASH prizes to be won! If you can complete the big X pattern in 20 numbers or less on the 4th game you will win \$500.

YOUTH ACTIVITIES HIGHLIGHTS

DINE & PLAY

A convenience for families dining at 8:30 p.m., our Youth Activities Counselors will be available at 9:30 p.m. at the entrance of Lumière's, Parrot Cay and Animator's Palate dining rooms to bring registered children to join the fun in the Oceaneer Club and Oceaneer Lab.



Deck 5, Aft (7-5864) 8:00 a.m. - 12:00 mid

Infants and Toddlers can enjoy toys and activities at Flounder's Reef Nursery. Reservations are first come, first served so please stop by!



Deck 5, Midship (7-1440) 8:00 a.m. - 10:00 p.m.
(3-12 years old)

ALADDIN'S FUN ADVENTURES

11:00 a.m.

Come join us as we go on a fun-filled Arabian adventure, discover a flying carpet and find the hidden Genie.

CAMP OUT

9:00 p.m.

You will enjoy a camp fire night out under the stars that is filled with games, adventures and lots of crazy surprises.



Deck 5, Midship (7-1445) 11:00 a.m. - 12:00 mid
(3-12 years old)

4TH PIGS PASTA PALACE

11:15 a.m.

Build your very own house made out of pasta and play-doh for Franco, the Fourth Little Pig, to see if it will withstand nature's forces.

RATATOUILLE COOKING SCHOOL

7:30 p.m.

Join our Ratatouille Cooking School for baking fun! Make new friends and bake your own Chocolate Chip Cookies!



Deck 2, Midship (7-5816) 9:00 a.m. - 1:00 a.m.
(11-14 years old)

GAMES & MORE

3:00 p.m.

All games are welcome during this time-children will play together with other counselors.

PIZZA PERFECTION

10:45 p.m.

Where do pizzas come from? Let's make some of our own as we answer questions and add ingredients in preparation to eat them!



Deck 11, Midship (7-18517) 12:00 p.m. - 2:00 a.m.
(14-17 years old)

ROCKBAND CHALLENGE

2:00 p.m.

Come and rock out with your friends and create your own band.

PUMP IT UP

10:00 p.m.

Join us in the Fitness Center for a Teen Only workout. Meet in Vibe to join in!

BUENA VISTA THEATRE

Today's Movies



11:00 a.m.
Duration: 2 hr 22 min
Rating: PG-13



1:45 p.m.
Duration: 2 hr 05 min
Rating: PG-13



4:30 p.m. & 9:00 p.m.
Duration: 2 hr 30 min
Rating: PG-13

Who Wants to Be a Mouseketeer

Your chance to get into the world famous hot seat and win an exclusive prize in our version of the well known television game show.

*Studio Sea,
Deck 4, Midship,
7:45 & 9:45 p.m.*

ADULT CABARET

Featuring the Comedy & Music of JUNK, as they entertain you in this adult exclusive show.

*Rockin' Bar D (18+)
Deck 3, Forward,
10:30 p.m.*

YOUTH ACTIVITIES OPEN HOUSE

Open House is an opportunity for all to come and participate in a variety of exciting activities and free time in the Oceaneer Club, Lab, Vibe and Edge throughout the cruise. During these times secured programming will still be offered in the other venue for those looking to check their children into care.

Edge: 9:00 a.m. - 10:30 a.m.
Disney's Oceaneer Lab: 11:00 a.m. - 1:30 p.m.
Disney's Oceaneer Club: 3:30 p.m. - 6:30 p.m.

MORE TO ENJOY WHILE ONBOARD



PLAN YOUR NEXT CRUISE

Today is a great day to visit the Future Cruise Sales Desk located Midship on Deck 4, or call 7-2848 to find out how you can save 10%, receive up to a \$200 onboard credit, and pay a reduced deposit on your next cruise!



DISNEY VACATION CLUB® GROUP PREVIEW

Want to learn more about taking magical vacations year after year? Please see a Disney Vacation Club representative on Deck 4, Midship, or call 7-2805 from your stateroom phone for more information about our interactive group presentation.



VISTA SPA

Deck 9, Forward - Phone: 7-1465

SALON TASTER SPECIAL

Combine any of the following treatments to indulge in Scalp Massage, Neck and Shoulder Massage, European Facial, Conditioning Hair Treatment, Eye Collagen Treatment, Hand Treatment, Foot and Ankle Massage, Sunflow Makeover Application.

Pick 3 for 99 Pick 5 for 119 All 8 for 139

GUCCI WATCHES

Recognised for the design, quality and Craftmanship, combining Swiss precision and Italian Style.

Available in Treasure Ketch, Deck 4, Forward.



GET THE PICTURE

Shutters has a variety of great photo packages available to preserve your cruise memories. Visit Shutters, Deck 4, Aft, for more information. Don't forget, to shop for DUTY FREE digital cameras and accessories.

EARLY FLIGHT INFORMATION

Should you have a flight out of the Barcelona airport prior to 10:30 am on Thursday, June 27th, kindly bring your airline tickets to Guest Services on Deck 3, Midship for additional information and assistance.

CURRENCY EXCHANGE

Euros will be available for exchange at Guests Services, Deck 3, Midship, 24 hrs a day. Not all currencies will be exchanged onboard, so please check with Guests Services for further information.

CASH DECLARATION NOTICE

Guests going ashore in port with over 10,000 Euros (or cash equivalent in any other currency), are required to declare it to Customs upon arrival, or risk having it confiscated if stopped by local authorities.



Welcome to the port of Villefranche, France. Please check your Port Adventures tickets for your meeting times and locations. Ask our friendly team at the Port Adventures Desk, Deck 3, Midship, during operational hours, for availability for tours in La Spezia, Civitavecchia and Naples.

SHOPPING

DISNEY MAGIC AND CHARACTER JEWELRY

Choose from DCL, Princesses, Mickey Mouse and other characters necklaces, bracelets and more. Available in Treasure Ketch, Deck 4, Forward.

ROMERO BRITTO ART AT THE VISTA GALLERY

Stop by the Vista Gallery to view original artwork by popular artists such as Romero Britto. Britto's whimsical and colorful pieces feature some of your favorite Disney characters in a style that only Britto can create. Deck 4, Midship.

GUCCI AND JUICY COUTURE SUNGLASSES

Gucci and Juicy Couture sunglasses! Gucci is one of the world's top fashion brands, Juicy Couture an up and coming contemporary fashion brand. Visit Treasure Ketch, Deck 4, Forward.

BRIGHT NEW DISNEY CRUISE LINE FASHIONS

Brighten up your closet when you stop by Treasure Ketch and pick up one of the colorful Disney Cruise Line branded tops. These stylish pieces feature some of your favorite characters and make great souvenirs from your cruise!

FRENCH FINE JEWELRY BY CHARRIOL

Visit Treasure Ketch and view the innovative French designs of Charriol fine jewelry. Combining stainless steel nautical cable with 18 karat gold and diamonds, the unique styles by Charriol are sure to captivate you.

2013 DATED MERCHANDISE

Take home a piece of Disney Cruise Line 2013 Dated Merchandise, From T-shirts, sweat shirts, photo albums and many more. Stop by Mickey's Mates Deck 4, Forward.

Due to port regulations, when the ship is docked, the stores will remain closed.

IMPORTANT INFORMATION

Security Notice

All Guests (including Children) who wish to disembark or embark the ship are required to present their Key to the World card at the gangway. A photo ID is also required for those Guests who are 18 years of age or older. Guests under the age of 18 are required to have a Parent, Guardian or other responsible adult sign an authorization form at the time it is given out if they wish to go ashore unaccompanied. Authorization forms are available at the gangways and Guest Services.

Cold and Flu Reminder

Please wash hands frequently and thoroughly, particularly before meals. Contact the Health Center by dialing 7-1923, should anyone in your party become ill.

Inclement Weather

For the safety of all Guests, outdoor events may be changed due to unforeseen weather conditions.

Corridor Quiet Hours

As a courtesy to all our Guests, please recognize quiet hallway hours from 10:00 p.m. til 8:00 a.m.

Environmental Message

With Disney's commitment to the Environment please refrain from throwing anything over the Ship's side. Thank you.

No Reserved Seats Policy

As a courtesy to all Guests we kindly advise that the saving of seats is not permitted in the Walt Disney Theatre, and the saving of the sun loungers is not permitted on Deck 9 and 10. Items left unattended will be returned to lost and found at Guest Services, Deck 3, Midship.

Smoking

For the comfort of our Guests the following open deck areas on the Starboard Side are designated as Smoking areas: Deck 4 Starboard side from 6:00pm to 6:00am ONLY, Deck 9 Forward Starboard side at Quiet Cove and Deck 10 Starboard side. Smoking is prohibited in all Guest staterooms. Guests found smoking in their staterooms will be charged a \$250 stateroom recovery fee. Electronic cigarettes may only be used in designated smoking areas.

Sunscreen Advisory

Don't forget to apply sunscreen and insect repellent when going ashore.

Walt Disney Theatre

Theatrical performances may use artificial fog, strobe lights, pyrotechnics and other special effects. For the safety of our performers and the comfort of those around you, the use of any photography or video recording device or any electronic equipment is prohibited.

Verandah Safety

Please do not leave any combustible materials on your balcony when not present in your stateroom for safety reasons.

Morning	8:45	9:00	9:15	9:30	9:45	10:00	10:15	10:30	10:45	11:00	11:15	11:30	11:45	12:00	12:15	12:30	12:45	1:00	1:15	1:30	1:45	
FUNNEL VISION																						
BUENA VISTA THEATRE	The Avengers (PG-13) Duration: 2 Hours 22 Minutes																			Iron Man 3 (PG-13)		
CHARACTER																						
FUN FOR ALL AGES	Interdenominational Service Sessions < Begins at 8:00 a.m.					Board Game Challenge Promenade Lounge					Family Crafts Promenade Lounge					Disney Trivia Promenade Lounge						
	Giant Jenga Diversions					Wii Challenge: Mario Kart Promenade Lounge																
ADULTS	Friends of Bill W. Amenator's Palate < Begins 8:30 am	Introduction to Acupuncture Vista Spa Fitness Center					Couples Massage Workshop Vista Spa Fitness Center															
												Matinee Movie										
VIBE 14-17 YEARS OLD												Craft Time										
EDGE 11-14 YEARS OLD	☺ Open House																					
OCEANEER LAB 3-12 YEARS OLD												☺ Open House										
OCEANEER CLUB 3-12 YEARS OLD												🐷 "4th Pigs Pasta Palace" 11:15 a.m. - 12:15 p.m.										
												👑 Aladdin's Fun Adventures					Lunch					
OUT AND ABOUT	Open House Edge																					

Afternoon	2:00	2:15	2:30	2:45	3:00	3:15	3:30	3:45	4:00	4:15	4:30	4:45	5:00	5:15	5:30	5:45	6:00	6:15	6:30	6:45	7:00					
FUNNEL VISION																										
BUENA VISTA THEATRE	Iron Man 3 (PG-13) DOLBY 3D Duration: 2 Hours 05 Minutes < Begins at 1:45 p.m.										Lincoln (PG-13) Duration: 2 Hours 30 Minutes															
CHARACTER											Minnie Lobby Atrium Preludes		Tiana Lobby Atrium Preludes		Donald Lobby Atrium Preludes		Cinderella									
FUN FOR ALL AGES	X-Box Challenge Promenade Lounge					Team Trivia Promenade Lounge					Chip-It Golf (12+) Goofy Pool Stage					Live Music with The Dreamers Promenade Lounge					Walt Disney Theatre					
	Pictionary Challenge Promenade Lounge					Family Crafts Promenade Lounge					Shuffle Board Goofy Pool Challenge					LIVE Music with Charlie Reuter Lobby Atrium					The Wheel Promenade Lounge					
ADULTS	Facial Workshop Vista Spa Fitness Center										Singles' Mingle Cove Cafe															
	Hair Seminar Vista Spa Fitness Center					Fab Abs Wellness Seminar Vista Spa Fitness Center																				
VIBE 14-17 YEARS OLD	Rockband Challenge					Cards					Craft Corner					Game Challenge					Xbox Kinect - Just Dance Challenge		Trivia Challenge			
EDGE 11-14 YEARS OLD	Games & More																									
OCEANEER LAB 3-12 YEARS OLD												Dinner														
OCEANEER CLUB 3-12 YEARS OLD												☺ Open House														
OUT AND ABOUT												🐷 "Mouseketeer Training" 5:15 p.m. - 6:00 p.m.														

Evening	7:15	7:30	7:45	8:00	8:15	8:30	8:45	9:00	9:15	9:30	9:45	10:00	10:15	10:30	10:45	11:00	11:15	11:30	11:45	12:00	12:15		
FUNNEL VISION	Lady and the Tramp (G) Funnel Vision										Herbie Goes To Monte Carlo (G) Funnel Vision												
BUENA VISTA THEATRE	La Spezia: The Birth of Beauty Buena Vista Theatre					Lincoln (PG-13) Duration: 2 Hours 30 Minutes																	
CHARACTER	Goofy Lobby Atrium		Minnie Preludes		Pluto Lobby Atrium		Donald Lobby Atrium		Chip & Dale Lobby Atrium														
FUN FOR ALL AGES	Bingo Pre Sales		Kick-off \$500 Jackpot Rockin' Bar D			Walt Disney Theatre			Who Wants to be a Mouseketeer? Studio Sea			Family Superstar Karaoke Studio Sea			LIVE Music with Charlie Reuter Lobby Atrium			Family Dance Party Studio Sea					
	Who Wants to be a Mouseketeer? Studio Sea			The Wheel Promenade Lounge			Live Music with The Dreamers Promenade Lounge			Live Music with The Dreamers Promenade Lounge													
ADULTS	Tony Delaney LIVE Quiet Cove Pool			Tribute to Nat King Cole Sessions			LIVE Music with Charlie Reuter Sessions			Guest DJ Miss Ninja Rockin' Bar D			Variety: Junk Rockin' Bar D			Guest DJ Miss Ninja Rockin' Bar D							
										Club 18*21 - Social Diversions			Music and Martinis' with Tim Moss Sessions			Late Night Piano Sessions							
VIBE 14-17 YEARS OLD	Trivia Challenge			Spoons Challenge						Pump It Up			Pizza Perfection										
EDGE 11-14 YEARS OLD	Gender Wars			Sports Deck Fun									Pizza Perfection										
OCEANEER LAB 3-12 YEARS OLD	Ratatouille Cooking School											4 Square Competition											
OCEANEER CLUB 3-12 YEARS OLD	Pluto's Pajama Party											Camp Out											
OUT AND ABOUT												Sports Deck Fun Edge											

Symbol for activities that will be repeated during the cruise



FOLD

Fold along the dotted lines and take me with you so you don't miss any of the fun!

FOLD

- FUNNEL VISION SERIES
- BUENA VISTA THEATRE SERIES
- CHARACTER SERIES
- FUN FOR ALL AGES SERIES
- ADULTS SERIES
- VIBE SERIES
- EDGE SERIES
- OCEANEER LAB SERIES
- OCEANEER CLUB SERIES
- OUT AND ABOUT SERIES
- BINGO
- VILLAINS
- WHO WANTS TO BE A MOUSEKETEER?
- LIVE MUSIC WITH CHARLIE REUTER
- LIVE MUSIC WITH THE DREAMERS
- GUEST DJ MISS NINJA
- CLUB 18*21 - SOCIAL DIVERSIONS
- MUSIC AND MARTINIS' WITH TIM MOSS
- LATE NIGHT PIANO
- BINGO
- VILLAINS
- WHO WANTS TO BE A MOUSEKETEER?
- LIVE MUSIC WITH CHARLIE REUTER
- LIVE MUSIC WITH THE DREAMERS
- GUEST DJ MISS NINJA
- CLUB 18*21 - SOCIAL DIVERSIONS
- MUSIC AND MARTINIS' WITH TIM MOSS
- LATE NIGHT PIANO

SUNDAY, JUNE 16, 2013 - VILLEFRANCHE

BUENA VISTA THEATRE



11:00 a.m.
Duration: 2 hr 22 min
Rating: PG-13



1:45 p.m.
Duration: 2 hr 05 min
Rating: PG-13



4:30 p.m. & 9:00 p.m.
Duration: 2 hr 30 min
Rating: PG-13

Fire/Security: 7-3001
Medical EMERGENCY: 7-3000
Health Center: 7-1923

IMPORTANT NUMBERS

YOUTH ACTIVITIES THEMED EXPERIENCES

CLUBHOUSE SERIES focuses on movement and includes large ground games & features content which appeals to younger children.

STORYBOOK SERIES is designed with a strong connection to the Disney classic stories.

JUMP UP! SERIES includes large ground games & movement-oriented activities.

CREATE & INVENT SERIES will have a tactile focus allowing children to create and admire their work.

WIN THE SPOTLIGHT SERIES focuses on children's stage presence with lots of activities and enthusiasm.

SOOLVE IT! SERIES are less active, but will challenge children with problem/solutions-based activities.

YOUTH ACTIVITIES OPEN HOUSE A non-secured program with activities for families, adults and children of all ages to enjoy together.

SHIP DIRECTORY

YOUTH ACTIVITIES

DISNEY'S OCEANEER CLUB	DECK 5, MID	8:00 AM - 10:00 PM
DISNEY'S OCEANEER LAB	DECK 5, MID	11:00 AM - 12:00 MID
EDGE	DECK 2, MID	9:00 AM - 1:00 AM
FOUNDER'S REEF NURSERY	DECK 5, AFT	8:00 AM - 12:00 MID
VIBE	DECK 11, MID	12:00 PM - 2:00 AM

RECREATION

GOOFLY'S POOL	DECK 9, MID	6:00 AM - 12:00 MID
MICKEY'S POOL	DECK 9, AFT	8:00 AM - 10:00 PM
MICKEY'S SLIDE	DECK 9, AFT	11:00 AM - 5:30 PM
MICKEY'S SPLASH ZONE	DECK 9, AFT	10:00 AM - 8:00 PM
PORT ADVENTURES DESK	DECK 3, MID	7:30 AM - 9:00 AM
QUIET COVE POOL	DECK 9, FWD	6:30 PM - 8:30 PM
VISTA FITNESS CENTER	DECK 9, FWD	6:00 AM - 12:00 MID
WIDE WORLD OF SPORTS DECK	DECK 10, AFT	6:30 AM - 10:00 PM

GENERAL INFORMATION

BUENA VISTA THEATRE	DECK 5, AFT	SHOWTIMES
DISNEY VACATION CLUB DESK	DECK 4, MID	6:00 PM - 11:00 PM
FUTURE CRUISE SALES DESK	DECK 4, MID	7:00 PM - 10:30 PM
FUNNEL VISION	DECK 9, MID	SHOWTIMES
GUEST SERVICES	DECK 3, MID	24 HOURS
HAIR BRAIDING	DECK 9, MID	
MEDICAL HEALTH CENTER	DECK 1, FWD	9:30 AM - 11:00 AM
		4:30 PM - 7:00 PM
PORT & SHOPPING DESK	DECK 3, MID	7:30 PM - 8:30 PM
PRELUDES	DECK 4, FWD	5:45 PM - 6:30 PM
		8:00 PM - 8:45 PM
QUARTER MASTERS (ARCADE)	DECK 9, MID	24 HOURS
SHOOTERS PHOTO GALLERY	DECK 4, AFT	6:30 PM - 11:00 PM
VISTA SPA AND SALON	DECK 9, FWD	8:00 AM - 10:00 PM
WALT DISNEY THEATRE	DECK 4, FWD	SHOWTIMES

SHOPPING

MICKEY'S MAIES	DECK 4, FWD	7:30 PM - 12:00 MID
TREASURE KETCH	DECK 4, FWD	7:30 PM - 12:00 MID
ART GALLERY	DECK 4, MID	7:30 PM - 11:00 PM
UP BEAT	DECK 3, FWD	7:30 PM - 12:00 MID

Character Appearances

MINNIE MOUSE

Lobby Atrium - 5:15 p.m.
Preludes - 8:00 p.m.

PRINCESS TIANA

Preludes - 5:30 p.m.

DONALD DUCK

Lobby Atrium
5:45 p.m. & 10:00 p.m.

CINDERELLA

Preludes - 6:00 p.m.

GOOFLY

Lobby Atrium - 7:30 p.m.

MICKEY MOUSE

Lobby Atrium - 8:00 p.m.

PLUTO

Lobby Atrium - 9:30 p.m.

CHIP & DALE

Lobby Atrium - 10:30 p.m.



Don't forget your Camera to capture those Magical Moments!

Check here each day for Character appearances. For detailed Character appearance information, please dial 7-PALS or see the Character Information Board in the Lobby Atrium. Meet-and-Greets will be advertised for the length of time the line will be open. To avoid disappointment, please meet at start time of appearances.

DINNER MENU

Animator's Palate: Show Dinner
Parrot Cay: Island Dinner
Lumière's: French Dinner
Dining Times: 6:00pm & 8:30pm

Deja Vu (Alcoholic)
Pino Coco Lada (Non - Alcoholic)
Evening Attire: Cruise Casual

Sunday: Party Sunny High: 77 F / 25 C
Monday: Sunny High: 75 F / 23 C

DINING & LOUNGES

BREAKFAST

GOOFLY'S GALLEY	DECK 9, AFT	7:00 AM - 9:30 AM
LUMIERE'S (A-LA-CARTE)	DECK 3, MID	8:00 AM - 9:30 AM
PARROT CAY	DECK 3, AFT	7:30 AM - 10:30 AM
TOPSIDERS BUFFET	DECK 9, AFT	7:15 AM - 10:00 AM

LUNCH

GOOFLY'S GALLEY	DECK 9, AFT	10:45 AM - 6:30 PM
LUMIERE'S	DECK 3, MID	12:00 PM - 1:30 PM
PINOCCHIO'S PIZZERIA	DECK 9, MID	10:45 AM - 6:00 PM
PLUTO'S DOG HOUSE	DECK 9, AFT	10:45 AM - 6:00 PM
TOPSIDERS BUFFET	DECK 9, AFT	12:00 PM - 2:00 PM

DINNER

ANIMATOR'S PALATE	DECK 4, AFT	6:00 PM & 8:30 PM
LUMIERE'S	DECK 3, MID	6:00 PM & 8:30 PM
PALO	DECK 10, AFT	6:00 PM - 8:30 PM
PARROT CAY	DECK 3, AFT	6:00 PM & 8:30 PM
PLUTO'S DOG HOUSE	DECK 9, AFT	6:00 PM - 10:00 PM
TOPSIDERS CASUAL DINING	DECK 9, AFT	6:30 PM - 8:30 PM

* TO BOOK YOUR TABLE, PLEASE CALL 7-6843

LATE NIGHT SNACKS

DIVERSIONS	DECK 3, FWD	11:00 PM - 11:45 PM
ICE CREAM AT GOOFLY'S GALLEY	DECK 9, AFT	6:00 PM - 11:00 PM
PINOCCHIO'S PIZZERIA	DECK 9, MID	9:30 PM - 12:00 MID
PROMENADE LOUNGE	DECK 3, AFT	11:00 PM - 11:45 PM

ADDED FEATURES

BEVERAGE STATION	DECK 9, AFT	24 HOURS
ROOM SERVICE	DIAL 7-4330	24 HOURS

ENTERTAINMENT - LOUNGES - BARS

Adults must be 21 and older to consume alcoholic beverages.

BEAT STREET	DECK 3, MID	(AFTER 9:00 PM, ADULTS ONLY)
COVE CAFE (18+)	DECK 9, MID	6:30 AM - 12:00 MID
DIVERSIONS (18+)	DECK 3, FWD	5:00 PM - 12:00 MID
INTERNET CAFE	DECK 3, AFT	24 HOURS
PRELUDES	DECK 4, FWD	5:45 PM - 6:30 PM
		8:00 PM - 8:45 PM
PROMENADE LOUNGE	DECK 3, AFT	3:00 PM - 12:00 MID
PINOCCHIO'S PIZZERIA	DECK 9, MID	9:30 AM - 12:00 MID
PLUTO'S DOG HOUSE	DECK 9, AFT	10:00 AM - 6:00 PM
ROCKIN' BAR D (18+)	DECK 3, FWD	7:00 PM - 2:00 AM
SESSIONS (18+)	DECK 3, FWD	5:00 PM - 12:00 MID
SIGNALS (18+)	DECK 9, FWD	10:00 AM - 10:30 PM
STUDIO SEA	DECK 4, MID	SHOWTIMES

Consumers who order raw or partially cooked, ready-to-eat food of animal origin, are hereby informed that the food is not sufficiently cooked to ensure its safety.

All Ashore: Please See Tendering Letter
All Aboard: 6:30 p.m.

Ship's Agent In Villefranche

Medacruises Agency
Medicruises Agency
Medicruises Agency
Daniel Seguin - Operations Director
Littoral Enterprises, rue Andrieu Allard F-13015, 13002, Marseilles, France
Tel: 011-33-5-57-778-421 | Mobile: 011-33-6-08-45-57-08

VILLEFRANCHE

PORT MAP

AT A GLANCE

Capital:

Paris

Location:

Located about 4 miles (6km) east of the city of Nice

Population:

6,650

Language:

French

Currency:

Euro

Banking:

Banks are available outside the port.

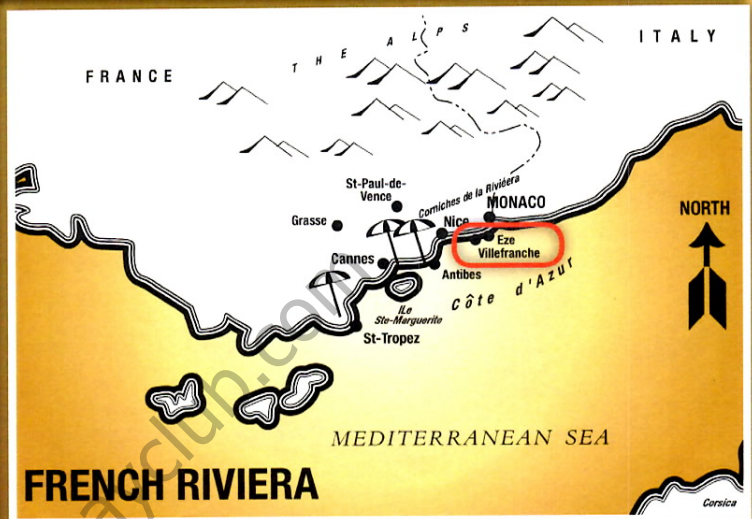
Post Office:

The main post office is located off Avenue Albert 1st. and is open Monday - Friday 9:00am - 12:00pm, Saturday 8:30am - 11:30am.

Transportation:

A limited number of taxis are available at the pier.

Browse your Destination Guide (found in your stateroom) for more details.



FRENCH RIVIERA

PORT ADVENTURERS...

Check your ticket for the correct meeting time and location of your tour. Your Port Adventures Team will direct you to transportation.

DON'T FORGET YOUR...

Photo ID and Key to the World Card as well as Cash and/or Credit Cards. Do you have your VIP cards?



IN CASE OF EMERGENCY...

Villefranche: Port Agent – Medacruise Agency Littoral Enterprises 8, rue Andre Allar F-13015, Marseille, France

Email: Marseille@medacruise.com
Call: 011+33-4-919-95-21-67
Fax: 011+33-6-23-40-01-82

© PPI 2013 DNS Villefranche

CHANNEL 25-3...

Watch channel 25-3 for insider tips on how to spend your free time, before or after your tour and where to find the best local goods ashore! Stop by Gemma's desk for more information to help create the best experience for you and your family!

SHOPPING GUIDE



Gemma

An Overview of Villefranche

This is a busy town and part of the Côte d'Azur. A couple of features that make it attractive to visitors are the seaside, with beaches, terrace cafés, restaurants and the lovely old town.

From the main road above, you can look down across the red tile roofs of the old town, with the distinctive church and bell tower in the center. Like the medieval villages of the "back country," the narrow cobblestone and bricked streets slope steeply down (in this case towards the sea) or traverse along the slope, with vaulted passages beneath the houses. There's quite a medieval feeling here, with just the many little restaurants to remind you you're in tourist country. There are also quiet little squares, like the Place Félix Poullan beside the church, and the Place de l'Eglise just below, with a bench circling a beautiful big tree. Built on the terraced hills overlooking the Mediterranean Sea, the Promenade des Marinieres stretches along the waterfront of a deep-water harb or that served as the base for the US 6th Fleet until 1967, and is still used sometimes as a harbor by the US Navy. On the water's edge is the massive wall and Citadel, a fortress built in 1557 by Emmanuel Philibert, Duke of

Savoy. Today, the Citadel houses the Town Hall, a congress centre, three museums, and an open air theatre.

The fort of Mont Alban offers an incomparable view of Cap Ferrat and the Eastern coastline as far as Italy. From the Plateau Saint-Michel, the view stretches westward to the Bay of Angels in Nice, Cap d'Antibes and the Esterel in the distance more than 25 miles (40 km) away. On a clear winter day, one may also observe the mountains of Corsica in the distance.

The bay of Villefranche - between the Cape of Nice and Cap Ferrat is one of the deepest natural harbors of any port in the Mediterranean Sea and provides a safe anchorage for large ships. The city limits extend to the hills surrounding the bay climbing from sea level to an altitude of 1750 ft (520 m) at Mont-Leuze. The three "Corniches" or main roads linking Nice to Italy pass through Villefranche and offer spectacular vistas of the coast and surrounding hills.

