

PERSONAL NAVIGATOR

SATURDAY, MAY 19, 2012

Sunrise: 6:33 a.m. Sunset: 8:04 p.m.
Evening Attire: Cruise Casual
All Aboard: 3:45 p.m.

Saturday: Mostly Sunny High: 77°F/25°C
Sunday: Partly Cloudy High: 78°F/26°C

PORT CANAVERAL, FLORIDA



Join us tonight in the beautiful
Walt Disney Theatre for a magical,
musical journey through the
wonderland of the Disney Fantasy.

WALT DISNEY THEATRE
DECKS 3 & 4, FORWARD
6:15 P.M. & 8:30 P.M.

Assistance available at the entrance on Deck 3 to the Walt Disney Theatre 30 minutes prior to show time.

Welcome Aboard!

Your Stateroom & Luggage

Staterooms will be ready at 1:30 p.m. Stateroom hosts will deliver luggage throughout the day until 5:30 p.m.

Staterooms with Bunk Beds

Bunk beds are recessed into the ceiling and will be prepared during evening turndown service by your Stateroom Host/ess.

To Change Dining Assignment

Requests for different seating times will be taken today:

- 1:00 - 3:15 p.m. - Royal Court
- 3:15 - 5:00 p.m. - Please dial 7-1831/ 7-1832/ 7-1833

Palo & Remy Dining Reservations

Are required and will be taken on a first come basis today at:

- 1:00 p.m. - 3:15 p.m. Palo & Remy
- 3:15 - 5:00 p.m. Please leave a voice mail at 7-9735 for Palo or 7-9734 for Remy.

Dinner

- 5:45 p.m. - First seating
- 8:15 p.m. - Second seating

Please check your dining tickets for details of your dining rotation, and bring them to your specific dining location. There is no need to wait in line prior to dinner. Dining Rooms open at designated seating times and your table is reserved each night of your cruise.

SAILING AWAY

It's time to go Sailing Away!
Join Mickey and Minnie, along
with Tinker Bell and the rest of
the gang, as they welcome you
aboard the Disney Fantasy.

4:30 p.m.
Deck Stage,
Deck 11, Midship

Don't Miss:

Disney Fantasy - Talent Show Sign Ups

Guest Services, Deck 3, Midship

Does your family have what it takes to make their performing dreams come true? Find out at the Disney Fantasy Family Talent Show - dare to show your family's flair! Pre-register at the Guest Services Desk, Deck 3, Midship. Your last chance to sign up is at 4:00 p.m. on Thursday.

Walking Ship Tour

Meet at Preludes, Deck 3, Forward - 1:00 p.m. & 2:00 p.m.

Join your Cruise Staff as they give you tips and help you navigate the Disney Fantasy's entertainment venues.

Mirror, Mirror Game Show

D Lounge, Deck 4, Midship - 7:30 p.m. & 9:45 p.m.

Head to D Lounge for the fairest game show of them all, Mirror, Mirror featuring the Magic Mirror and everyone's favorite dwarf, Dopey.

Match Your Mate

The Tube (18+), Deck 4, Aft - 10:30 p.m.

It's time to play everyone's favorite couples game show - Match Your Mate!



Visit Shutters for all your photographic needs, from Digital cameras, batteries, binoculars and accessories. All photos taken during this cruise will be available for viewing on our photo kiosks at Shutters Digital, as well as in your photo folder at Shutters, Deck 4, Midship.

DINNER MENU

Animator's Palate: Pacific Rim Cuisine
Enchanted Garden: Continental Market
Royal Court: French Dinner

DRINK OF THE DAY

Paradise Punch (Alcoholic)
Espresso Chiller (Non Alcoholic)

IMPORTANT NUMBERS

Fire/Security: 7-3001
Medical Emergency: 7-3000
Health Center: 7-1923

FAMILY ACTIVITY HIGHLIGHTS

MIRROR, MIRROR GAME SHOW

D Lounge, Deck 4, Midship - 7:30 p.m. & 9:45 p.m.

Head to D Lounge for the fairest game show of them all, Mirror, Mirror featuring the Magic Mirror and everyone's favorite dwarf, Dopey.

FAMILY KARAOKE

D Lounge, Deck 4, Midship - 10:15 p.m.

Join your Cruise Staff in D Lounge tonight and sing along to your favorite song- fun for everyone.

CRUISE HIGHLIGHTS

Saturday	PORT CANAVERAL Port Departure: 5:00 pm All Aboard: 3:45 pm Attire: Cruise Casual	A FANTASY COME TRUE! WELCOME SHOW Walt Disney Theatre 6:15 p.m. & 8:30 p.m.
Sunday	DAY AT SEA Attire: Formal	DISNEY'S ALADDIN Walt Disney Theatre 6:15 pm & 8:30 pm
Monday	DAY AT SEA Attire: Cruise Casual	DISNEY WISHES Walt Disney Theatre 6:15 p.m. & 8:30 p.m.
Tuesday	ST. MAARTEN All Ashore: 8:00 am All Aboard: 6:30 pm Attire: Pirate or Cruise Casual	THE AVENGERS - (PG-13) Walt Disney Theatre 4:30 pm & 7:45 pm
Wednesday	ST. THOMAS All Ashore: 7:45 am All Aboard: 4:00 pm Attire: Cruise Casual	SHOWTIME: DAVID WILLIAMSON Walt Disney Theatre 6:15 p.m. & 8:30 p.m.
Thursday	DAY AT SEA Attire: Semi Formal	DISNEY'S BELIEVE Walt Disney Theatre 6:15 p.m. & 8:30 p.m.
Friday	CASTAWAY CAY All Ashore: 9:45 am All Aboard: 5:00 pm Attire: Cruise Casual	AN UNFORGETTABLE JOURNEY Walt Disney Theatre 6:15 p.m. & 8:30 p.m.

Subject to change.



ADULT ACTIVITY HIGHLIGHTS



FITNESS CLASSES

Senses Spa and Salon has a variety of seminars and fitness classes available throughout the cruise.

BEVERAGE SEMINARS

Your Beverage team has a host of tastings and seminars to entertain and educate you. Stop by La Piazza, Deck 4, Aft to pre-book these experiences (nominal fee applies).

Mixology - Wine Tasting - Martini Tasting - Champagne Tasting - Beer Tasting - Cognac Tasting - Whisky Tasting - Tequila & Margarita Tasting

LIVE MUSIC WITH FINE WHINES

La Piazza, Deck 4, Aft - 7:30 p.m., 9:45 p.m. & 10:45 p.m.
Join our Jazz Duo, Fine Whines, as they play live for your listening pleasure.

CLUB 18*21 ICE BREAKER

O'Gills Pub, Deck 4, Aft - 10:00 p.m.

Club 18*21 is an exclusive gathering for young adult Guests. Come meet fellow cruisers and learn about the great activities the Disney Fantasy has to offer to help create the perfect cruise experience.



MATCH YOUR MATE

The Tube, Deck 4, Aft - 10:30 p.m.

It's time to play everyone's favorite couples game show - Match Your Mate!



FEATURED CABARET ACTS THIS VOYAGE



THE COMEDY & JUGGLING OF MICHAEL HOLLY

Michael Holly began his performing days on the cobbled streets of Fantasyland at Disneyland in 1985 and since then has been the comedy star of a dozen Las Vegas Shows including Vegas-The Show at Planet Hollywood, V-The Ultimate Variety Show at the Venetian, Les Folies Bergere at The Tropicana and has the highest rated one man comedy variety show in Las Vegas, his own, "Michael Holly's Off The Wall Comedy Hour".



COMEDY & MAGIC OF DAVID WILLIAMSON

David is an international award-winning magician. He is the first ever recipient of the prestigious International Brotherhood of Magicians Gold Cup Award of Excellence in close-up magic. David was voted Sleight of Hand Magician of the Year two years in a row by his peers at Hollywood's renowned Magic Castle. He was also twice awarded the Magic Castle Lecturer of the Year and the Magic Castle Parlor Magician of the Year. David was voted Most Wanted Magician at the 2003 European FISM Magic Convention.



THE COMEDY & HYPNOSIS OF DALE K

Hollywood's fabricated theory of hypnosis usually involves lightning bolts, zombie like trances and humans clucking like chickens. During his performances, Dale challenges these theories proving that hypnosis is simply the power of suggestion that consists of mind motivation rather than mind control. Using his creative abilities and abstract sense of humor, Dale K produces hypnosis events that are professional, unconventional and always hilarious. Just one of the many reasons why Dale K is a popular must see favorite with universal appeal and a yearly tour schedule of almost 200 cities worldwide.



THE COMEDY OF DAREN STREBLOW

Daren Streblow appeals to wide audiences and has been described many ways: clean comedian, Christian comedian, corporate comedian, business comedian, college comedian, church comedian, youth group comedian, club comedian, school-assembly comedian, outreach comedian, and cruise ship comedian. However, one description says it all - hilarious.

YOUTH ACTIVITIES HIGHLIGHTS



Deck 5 Midship (7-5864) 12:00 p.m. - 11:00 p.m.
Infants and Toddlers can enjoy toys and activities at It's A Small World Nursery. Reservations are first come, first served so please stop by!



Deck 5 Midship (7-1440)
12:00 p.m. - 12:00 Mid.



Deck 5 Midship (7-1445)
12:00 p.m. - 12:00 Mid.

REGISTRATION FOR 3-12 YEAR OLDS

Meet the Youth Activities Team in the Oceaneer Lab and Oceaneer Club, complete your registration & learn all about the Themed Experiences this cruise!



CLUBHOUSE SERIES - The Clubhouse Themed Experiences focus on movement and feature content which appeals to younger children. *Recommended 7 yrs & younger.*



STORYBOOK SERIES - The Storybook Series Themed Experiences are designed with a strong connection to the Disney classic stories.



JUMP UP! SERIES - The Let's Move! Themed Experiences will include large ground games & movement-oriented activities.



CREATE & INVENT SERIES - The Create & Invent Themed Experiences will have a tactile focus allowing children to create and admire their work.



IN THE SPOTLIGHT SERIES - The In The Spotlight Themed Experiences focus on children's stage presence with lots of activities and enthusiasm. *Recommended 7 yrs & older.*



SOLVE IT! SERIES - The Solve It! Themed Experiences are less active, but will challenge children with problem/solutions-based activities. *Recommended 7 yrs & older.*



OUT AND ABOUT SERIES - Set outside secured Youth Activities spaces, very active, appealing to Tweens. *Recommended 8 - 14 years*

DINE & PLAY

A convenience for families dining at 8:15 p.m., our Youth Activities Counselors will be available at 9:15 p.m. at the entrance of Royal Court, Enchanted Garden and Animator's Palate dining rooms to bring registered children to join the fun in the Youth Activity areas.

YOUTH ACTIVITIES OPEN HOUSE

Open House is an opportunity for all to come and participate in a variety of exciting activities and free time in the Oceaneer Club, Lab, Edge and Vibe throughout the cruise. During these times secured programming will still be offered in the other venue for those looking to check their children into care.



Deck 13 Midship (41-14426) - 12:00 p.m. - 12:00 a.m.

(11- 14 YEAR OLDS)

Edge is an interactive play space play video games, watch television and participate in arts and crafts with kids their own age.

TAKING IT TO THE EDGE

10:00 p.m.

Come to the Edge and get all the info you need to squeeze every bit of fun out of your stay on the Disney Fantasy.



Entrance on Deck 4 Forward (7- 9418)
12:00 p.m. - 1:00 a.m.

(14-17 YEAR OLDS)

THE DOWNLOAD

10:30 p.m.

Come up to Vibe and help plan all the fun activities you will be doing this cruise with your new friends! We'll use our very own Teens-only intranet database to decide how our week will go!

BUENA VISTA THEATRE

Feature Movies this Voyage

SATURDAY - PORT CANAVERAL

5:30 p.m.	G	Toy Story 3	XX DOLBY.3D
8:00 p.m.	G	Toy Story 3	XX DOLBY.3D
10:30 p.m.	G	Disneynature: Chimpanzee	

SUNDAY - DAY AT SEA

9:00 a.m.	G	Disneynature: Chimpanzee	
10:45 a.m.	PG	The Muppets	
3:00 p.m.	PG	Tangled	
5:15 p.m.	PG-13	John Carter	XX DOLBY.3D
8:00 p.m.	PG-13	John Carter	XX DOLBY.3D
10:45 p.m.	PG-13	War Horse	

MONDAY - DAY AT SEA

8:30 a.m.	G	Toy Story 3	XX DOLBY.3D
11:00 a.m.	G	Cars 2	XX DOLBY.3D
3:30 p.m.	G	Disneynature: Chimpanzee	
5:45 p.m.	PG	Tangled	XX DOLBY.3D
8:00 p.m.	PG	Tangled	XX DOLBY.3D
10:15 p.m.	PG-13	The Help	

TUESDAY - ST. MAARTEN

11:00 a.m.	G	Disneynature: Chimpanzee	
12:45 p.m.	PG	Tangled	XX DOLBY.3D
3:00 p.m.	G	Toy Story 3	XX DOLBY.3D
5:45 p.m.	PG	The Muppets	
8:30 p.m.	PG	The Muppets	
11:00 p.m.	PG-13	The Avengers	

WEDNESDAY - ST. THOMAS

9:30 a.m.	G	The Lion King	
11:30 a.m.	PG	The Muppets	
2:00 p.m.	PG-13	The Avengers	
5:00 p.m.	PG-13	War Horse	
8:00 p.m.	PG-13	War Horse	
11:00 p.m.	PG-13	John Carter	XX DOLBY.3D

THURSDAY - DAY AT SEA

10:00 a.m.	PG-13	The Avengers	
5:30 p.m.	G	Cars 2	XX DOLBY.3D
8:00 p.m.	G	Cars 2	XX DOLBY.3D
10:30 p.m.	PG-13	Real Steel	

FRIDAY - DISNEY'S CASTAWAY CAY

8:30 a.m.	G	Disneynature: Chimpanzee	
3:00 p.m.	PG-13	The Avengers	
6:00 p.m.	G	Disneynature: Chimpanzee	
8:30 p.m.	G	Disneynature: Chimpanzee	
10:30 p.m.	PG-13	The Avengers	XX DOLBY.3D

Subject to change.

MORE TO ENJOY WHILE ONBOARD



ADVENTURES BY DISNEY - HELLO WORLD

Join us for a special presentation tomorrow to learn what traveling with Adventures by Disney is all about. See our Adventure Guide on Deck 4, Midship, for more information and take advantage of a 10% discount off your next adventure!



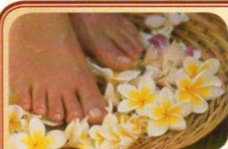
PLAN YOUR NEXT CRUISE

Already dreaming of your next magical cruise? Save 10% off most categories and receive an Onboard Credit for your next cruise by booking while onboard. Stop by the Future Cruise Sales Desk, Deck 4, Midship, or call extension 7-2848 to learn more.



PORT AND SHOPPING INFORMATION

Meet your Shopping Guides, Johan & Marissa at the Port & Shopping Desk, Deck 4, Midship 7:30 p.m. - 8:30 p.m. Don't miss tomorrow's Port & Shopping Show in the Buena Vista Theatre at 1:30 p.m. Stop by to pick up extra raffle tickets to win a Diamond Pendant.



SPA SPECIAL

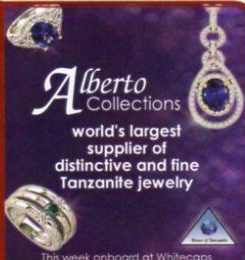
Book and receive your treatment today and you will receive a complementary extra 15 minute treatment of your choice.

Call Senses Spa & Salon,
7-1465

ALBERTO TRUNK SHOW

House of Tanzanite special trunk show of fine Tanzanite, colored Diamonds, Alexandrite, and Emerald jewelry from classic chic to over the top elegant designs hand made in the US.

This week onboard at Whitecaps



This week onboard at Whitecaps



GET THE PICTURE!

Amazing offer! Order all your stateroom photos on a CD for only \$349.95 and for \$50 more you can take home the printed copy as well! All your stateroom photos in digital as well as printed format for only \$399.95! Your photos will be ready for viewing in Shutters Digital, Deck 4, Midship this evening. Visit Shutters, Deck 4, Midship, to learn more. Conditions apply.

**Please note that photos are available for viewing on our interactive photo kiosks approximately five hours after being taken and are only available for purchase during this cruise.*

ONBOARD AIRLINE CHECK IN

If you would like to have your boarding passes printed for you onboard and have your luggage taken to the airport for you, register before St. Thomas. If you have Disney Cruise Line airport transfer to Orlando International Airport and fly with one of the participating airlines, stop at Guest Services, Deck 3, Midship, to register.

SURF @ SEA

\$0.75 per minute, or save money by buying blocks of time. \$55.00 for 100 minutes, \$100.00 for 250 minutes and \$150.00 for 500 minutes. Wireless information sheets are available at Guest Services, Deck 3, Midship.

Please note: Due to satellite connectivity, onboard internet service will be noticeably slower than you may be accustomed to and may at times be interrupted or unavailable.

ON DEMAND TV

Watch Disney movies, Hollywood features, ABC Shows, and even captioned content, plus much more "On Demand" for FREE in the comfort of your stateroom! Bookmark your movie and come back to watch it later. Press MENU on your stateroom television remote control, and follow the prompts.



Port Adventures are designed to ensure that you see the best that our ports have to offer. Explore the two nations of St. Maarten on a land tour or take an exhilarating RIB boat ride from the Dutch to the French side. From St. Thomas you can enjoy the scenic splendor of St. John or snorkel in the beautiful waters of the U.S.V.I. Our experienced Port Adventures team will help you find the best choices for your family at the Port Adventures Desk, Deck 5, Midship.

SHOPPING

GUESS

Global brand that symbolizes a worldwide leader in the fashion industry. Choose from watches, handbags, and small leathers. Available in Whitecaps, Deck 3, Forward.

GET YOUR CRUISE STARTED

Inaugural and Disney Fantasy merchandise, autograph books, pens, lanyards, sunglasses and much more available in Mickey's Mainsail and Sea Treasures, Deck 3, Forward.

FANTASY INAUGURAL MERCHANDISE

Bring home a memory of the Disney Fantasy's Inaugural sailings. Choose from tees, hats, sweatshirts, mugs and scrapbooks. Available at Sea Treasures, Deck 3, Forward.

VISTA GALLERY

Check out our amazing collection of original art exclusively created for the Disney Fantasy. This is your chance to own a piece of Disney Cruise Line history. Vista Gallery, Deck 4, Midship.

CHOPARD

Swiss luxury watches and jewelry, designed for artisans showcasing unparalleled glamour and craftsmanship. Where originality, creativity, and technical mastery are pushed to their ultimate limits. In addition to Chopard's collection, we offer the Happy Mickey line, exclusively designed for Disney.

BIBBIDI BOBBIDI BOUTIQUE

Becoming the princess of your dreams creates memories for a lifetime. Where Fairy Godmothers in training are ready with Pixie Dust and Magic! Make your reservations for princess makeovers and the Pirate League today. Limited space available. Bibbidi Bobbidi Boutique is located on Deck 5, Midship, or call ext. 9438 to make a reservation.

Due to port regulations, when the ship is docked, the stores will remain closed.

IMPORTANT INFORMATION

Security Notice

All Guests (including children) who wish to disembark the ship are required to present their Key to the World card at the gangway. A photo ID is also required for those Guests who are 18 years of age or older. Guests under the age of 18 are required to have a Parent, Guardian or other responsible adult sign an authorization form at the time it is given out if they wish to go ashore unaccompanied. Authorization forms are available at the gangways and Guest Services.

Please Note:

Please remember to use plenty of sunscreen and mosquito repellent when venturing ashore.

Cold and Flu Reminder

Please wash hands frequently and thoroughly, particularly before meals. Contact the Health Center by dialing 7-1923, should anyone in your party become ill.

Corridor Quiet Hours

As a courtesy to all our Guests, please recognize quiet hallway hours from 10:00 p.m. til 8:00 a.m.

Inclement Weather

For the safety of all Guests, outdoor events may be changed due to unforeseen weather conditions.

Environmental Message

With Disney's commitment to the Environment, please refrain from throwing anything over the Ship's side. Thank you!

No Reserved Seats Policy

As a courtesy to all our Guests, we kindly advise that the saving of seats is not permitted in the Walt Disney Theatre, and the saving of the sun loungers is not permitted on Deck 11, 12, and 13. Items left unattended will be returned to lost and found at Guest Services, Deck 3 Midship.

Smoking

For the comfort of our guests the following areas are designated as Smoking areas: - Promenade Deck (Deck 4), smoking is permitted Port Side, Aft only from 6:00 p.m. to 6:00 a.m.
- Currents - Deck 13, Forward, Port Side.
- Meridian Bar - Deck 12, Aft, Port Side, outside.
*Smoking is permitted on stateroom verandahs. Smoking is prohibited inside all guest staterooms. Guests found smoking in their staterooms will be charged a \$250 stateroom recovery fee.

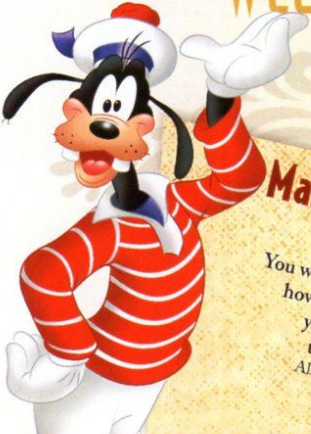
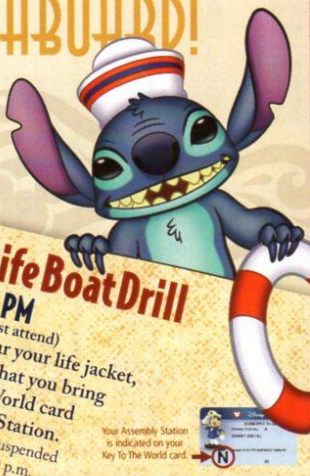
Walt Disney Theatre

Theatrical performances may use artificial fog, strobe lights, pyrotechnics and other special effects. For the safety of our performers and the comfort of those around you, the use of any photography, video recording device or any electronic equipment is prohibited.

Verandah Safety

Please do not leave any combustible materials on your balcony when not present in your stateroom for safety reasons.

WELCOME ABOARD!

Mandatory Life Boat Drill

4:00 PM


(All Guests must attend)
You will not need to wear your life jacket,
however it is critical that you bring
your Key To The World card
to your Assembly Station.
All ship services will be suspended
between 3:45 and 4:30 p.m.

SAILING AWAY

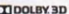


It's time to go Sailing Away!
Join Mickey and Minnie along
with Tinker Bell and the rest of
the gang as they welcome you
aboard the Disney Fantasy.

4:30 p.m.,
Deck Stage,
Deck 11, Midship

Your Assembly Station is indicated on your Key To The World card



Fold along the dotted lines and take me with you so you don't miss any of the fun!

Afternoon	1:45	2:00	2:15	2:30	2:45	3:00	3:15	3:30	3:45	4:00	4:15	4:30	4:45	5:00	5:15	5:30	5:45	6:00	6:15	6:30	6:45	
FUNNELVISION									<p>All ship services will be suspended during this time for the mandatory Boat Drill scheduled for 4:00 p.m.</p> <p>Please refer to the posted drill instructions prior to heading to your Assembly Station.</p>				<p>Tinker Bell (G) FunnelVision</p>									
MOVIES													<p>Toy Story 3 (G) </p>									
CHARACTER													<p>Mickey Cinderella Donald Lobby Atrium Dk 4, Mid Lobby Atrium</p>									
FUN FOR ALL AGES	<p>Pool Side Jams with DJ Brandon <i>Deck Stage</i></p> <p>Ship Tour (Earlier tour also at 1:00 p.m.) Preludes (Walt Disney Mural, Deck 3)</p>												<p> SAILING AWAY <i>Deck Stage</i></p> <p>Live Music with "The Dreamers" Lobby Atrium</p> <p> FANTASY CRUISE Walt Disney Theatre</p>									
ADULTS	<p>Closest to the Pin Golf Simulator</p> <p>Spa Raffle Senses Spa & Salon</p>																					
VIBE	Open House																					
EDGE	Open House																					
OCEANEER LAB	Open House and Registration																					
OCEANEER CLUB	Open House and Registration																					

Symbol for activities that will be repeated during the cruise

INAUGURAL

Sailings

2012-2013

Evening	7:00	7:15	7:30	7:45	8:00	8:15	8:30	8:45	9:00	9:15	9:30	9:45	10:00	10:15	10:30	10:45	11:00	11:15	11:30	11:45	12:00	
FUNNELVISION																						Remember the Titans (PG) FunnelVision
MOVIES																						DisneyNature: Chimpanzee (G) Buena Vista Theatre
CHARACTER																						Goofy Tiana Lobby Atrium Dk 4, Mid
FUN FOR ALL AGES																						Live Piano Music with Laurence J. Blackler Lobby Atrium
																						Live Piano Music with Laurence J. Blackler Lobby Atrium
ADULTS																						Live Jazz with Fine Whines La Piazza
																						Live Jazz with Fine Whines La Piazza
VIBE																						Match Your Mate The Tube
EDGE																						Rock The Tube With Guest DJ Immortal The Tube
OCEANEER LAB																						Live Jazz with Fine Whines La Piazza
OCEANEER CLUB																						Live Jazz with Fine Whines La Piazza

FOLD


IN THE SPOTLIGHT SERIES
SOLVE IT SERIES

JUMP UP! SERIES
CREATE & INVENT SERIES

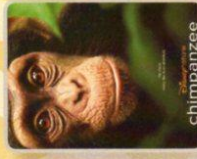
CLUBHOUSE SERIES
STORYBOOK SERIES

SATURDAY, MAY 19, 2012 - PORT CANAVERAL

BUENA VISTA THEATRE



FINDING NEMO
5:30 p.m. & 8:00 p.m.
Run Time: 1 hr 43 min
Rating: G



THE SIMPSONS MOVIE
10:30 p.m.
Run Time: 1 hr 18 min
Rating: G

Character Appearances

MICKEY MOUSE
Lobby Atrium - 5:15 p.m., 8:00 p.m. & 10:00 p.m.

CINDERELLA
Deck 4, Balcony
5:30 p.m. & 7:45 p.m.
Preludes - 9:30 p.m.

DONALD DUCK
Lobby Atrium - 5:45 p.m.

PLUTO
Lobby Atrium - 7:00 p.m.

SNOW WHITE
Deck 4, Balcony - 7:15 p.m.

GOOBY
Lobby Atrium
7:30 p.m. & 9:30 p.m.

PRINCESS TIANA
Preludes - 8:00 p.m.
Deck 4, Balcony - 10:00 p.m.

ARIEL
Deck 4, Balcony - 8:15 p.m.

PRINCESS AURORA
Deck 4, Balcony - 9:30 p.m.

For details of daily Disney character appearances, refer to the character line on your Navigator Grid, or the digital character board in the Lobby Atrium.

YOUTH ACTIVITIES THEMED EXPERIENCES

CLUBHOUSE SERIES
focuses on movement and features content which appeals to younger children.

STORYBOOK SERIES
is designed with a strong connection to the Disney classic stories.

WIMP UP SERIES
includes large ground games & movement-oriented activities.

CREATE & AVENUE SERIES
will have a tactile focus allowing children to create and admire their work.

IN THE SPOTLIGHT SERIES
focuses on children's stage presence with lots of activities and enthusiasm.

SOLOVE IT SERIES
are less active, but will challenge children with problem/solutions-based activities.

SHIP DIRECTORY

YOUTH ACTIVITIES	
DISNEY'S OCEANEER CLUB Deck 5, Mid 12:00 PM - 12:00 MID	DISNEY'S OCEANEER LAB Deck 5, Mid 12:00 PM - 12:00 MID
EDGE Deck 13, Mid 12:00 PM - 12:00 MID	VIBE Deck 4, Fwd 12:00 PM - 1:00 AM
IT'S A SMALL WORLD NURSERY Deck 5, Mid 12:00 PM - 11:00 PM	
RECREATION	
AQUADUCK Deck 12, Mid 12:00 PM - 3:00 PM	AQUALAB Deck 12, Aft 12:00 PM - 3:30 PM
DONALD'S POOL Deck 11, Mid 12:00 PM - 3:30 PM	GOLF/SPORTS SIMULATORS Deck 13, Aft 12:00 PM - 3:30 PM
GOOBY GOLF Deck 12, Aft 12:00 PM - 10:00 PM	GOOBY'S SPORTS DECK Deck 12, Aft 12:00 PM - 6:00 PM
MICKY'S POOL Deck 11, Mid 12:00 PM - 3:30 PM	MICKY'S SUDE Deck 11, Mid 12:00 PM - 3:30 PM
MIDSHIP DETECTIVE AGENCY Deck 2 & 5, Mid 11:30 AM - 9:00 PM	NEMO'S REEF Deck 11, Mid 12:00 PM - 3:30 PM
PORT ADVENTURES DESK Deck 5, Mid 12:00 PM - 3:30 PM	QUIET COVE POOL Deck 11, Fwd 12:00 PM - 3:30 PM
SNEELITE FALLS Deck 13, Fwd 12:00 PM - 3:30 PM	SENSES FITNESS CENTER Deck 11, Fwd 11:30 AM - 10:00 PM
GENERAL INFORMATION	
ARR-CADE Deck 11, Aft 24 HOURS	ADVENTURES BY DISNEY Deck 4, Mid 7:30 PM - 8:30 PM
DISNEY VACATION CLUB Deck 4, Mid 5:00 PM - 8:00 PM	FUTURE CRUISE SALES DESK Deck 4, Mid
GUEST SERVICES Deck 3, Mid 24 HOURS	MEDICAL HEALTH CENTER Deck 1, Fwd 4:30 PM - 7:00 PM
PORT & SHOPPING DESK Deck 4, Mid 7:30 PM - 8:30 PM	PRELUDES Deck 3, Fwd 5:45 PM - 6:30 PM
SENSES SPA AND SAUN Deck 11, Fwd 8:00 PM - 8:45 PM	SHUTTERS PHOTO GALLERY Deck 4, Mid 11:30 AM - 10:00 PM
SHUTTERS DIGITAL Deck 4, Mid 7:00 PM - 11:00 PM	
SHOPPING	
BIBBIDI BOBBIDI BOUTIQUE Deck 5, Mid 11:30 AM - 3:00 PM	MICKY'S MAINSAIL Deck 3, Fwd 5:45 PM - 11:00 PM
SEA TREASURES Deck 3, Fwd 5:45 PM - 11:00 PM	VISTA GALLERY Deck 4, Mid 6:00 PM - 10:00 PM
WHITECAPS Deck 3, Fwd 5:45 PM - 11:00 PM	

DINNER MENU

Animator's Palace Pacific Rim Cuisine
Enchanted Garden Continental Miter
Royal Court French Dinner
Dining Theme: 5:45pm & 8:15pm

DRINK OF THE DAY

Paradise Punch (Alcoholic)
Espresso Chiller (Non Alcoholic)

WEATHER FORECAST

Saturday: Mostly Sunny
High: 77°F/25°C
Sunday: Partly Cloudy
High: 78°F/26°C

DINING & LOUNGES

LUNCH

CABANAS Deck 11, Aft 12:00 PM - 3:15 PM	ENCHANTED GARDEN Deck 2, Mid 12:00 PM - 2:00 PM
FILMORE'S FAVORITES Deck 11, Mid 12:00 PM - 4:15 PM	LUIGI'S PIZZA Deck 11, Mid 12:00 PM - 3:30 PM
TOW MATER'S GRILL Deck 11, Mid 12:00 PM - 4:15 PM	

DINNER

ANIMATOR'S PALACE Deck 3, Aft 5:45 PM & 8:15 PM	ENCHANTED GARDEN Deck 2, Mid 5:45 PM & 8:15 PM
ROYAL COURT Deck 3, Mid 5:45 PM & 8:15 PM	

LATE NIGHT SNACKS

LA PLAZZA (18+) Deck 4, Aft 10:45 PM - 11:45 PM	LUIGI'S PIZZA Deck 11, Mid 9:30 PM - 12:00 MID
---	--

ADDED FEATURES

BEVERAGE STATION Deck 11, Mid 12:00 PM - 24 HOURS	EYE SCREAM Deck 11, Mid 12:00 PM - 11:00 PM
ROOM SERVICE Deck 0 24 HOURS	

ENTERTAINMENT - LOUNGES - BARS

Adults must be 21 and older to consume alcoholic beverages.

BON VOYAGE Deck 3, Mid 12:00 PM - 11:00 PM	COVE BAR (18+) Deck 11, Fwd 12:00 PM - 6:30 PM
COVE CAFE (18+) Deck 11, Fwd 11:30 AM - 12:00 MID	CURRENTS (18+) Deck 13, Fwd 12:00 PM - 10:30 PM
D LOUNGE Deck 4, Mid SHOWTIMES	FROZONE TREATS Deck 11, Mid 12:00 PM - 11:00 PM
LA PLAZZA Deck 4, Aft 12:00 PM - 12:00 MID	MERIDIAN (18+) Deck 12, Aft 5:00 PM - 12:00 MID
O'GILLS PUB Deck 4, Aft 12:00 PM - 12:00 MID	Ooh La La (18+) Deck 4, Aft 5:00 PM - 12:00 MID
OUTLOOK Deck 14, Mid 12:00 PM - 12:00 MID	SKYLINE (18+) Deck 4, Aft 5:00 PM - 12:00 MID
THE TUBE (18+) Deck 4, Aft 10:00 PM - 2:00 AM	VISTA CAFE Deck 4, Mid 12:00 PM - 10:00 PM
WAVES Deck 12, Aft 12:00 PM - 7:00 PM	

Consumers who order raw or partially cooked, ready-to-eat food of animal origin, are hereby informed that the food is not sufficiently cooked to ensure its safety.

GOOBY'S SPORTS

Digital Simulators

Sports Simulator
(Basketball, Baseball, Hockey or Soccer) \$25 / half hr, \$45 / hr
\$12 / half hr \$20 / hr
Reservations can be made at the Port Adventures Desk, Deck 5, Midship or at the Simulators, Deck 13, Aft

Golf Simulator

PORT ADVENTURES

Visit the Port Adventures Desk, Deck 5, Midship, for bookings & questions.

IMPORTANT NUMBERS

Fire/Security: 7-3001
Medical/Emergency: 7-3000
Health Center: 7-1923